

Connectors  
& Cables



Hardware



Optoelectronics



Power



Printers &  
Labeling



Protection &  
Suppression



Switches  
& Relays



Thermal  
Management



Wire  
Management

# Electronic Components & Hardware

# IRWIN

# Electronic Components & Hardware



- American Bright**
- LED Assemblies
  - LED Displays
  - LED Lighting
  - LEDs
  - Light Engines & Panels



- APM Hexseal**
- Circuit Breaker Boots
  - Self-Sealing Fasteners
  - Switch Boots



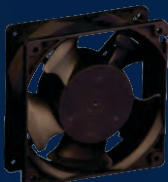
- Cambion**
- IC Sockets
  - Inductors & Chokes
  - Jumpers
  - Solder Lugs
  - Test Jacks
  - Test Points & Turrets



- CIT**
- Circuit Breakers
  - Relays
  - Switches



- Cooltron**
- AC Blowers
  - AC Fans
  - DC Blowers
  - DC Fans
  - Fan Cords
  - Fan Filters, Guards & Hardware
  - Heat Sinks



- Electronic Hardware Corporation**
- Control Handwheels
  - Knobs: Ball, Clamp, Control, Military & Transilluminated
  - Handles: Bridge, Clamping, Crank, Ledge, Leverage, Tapered
  - Index Plungers
  - Leveling Feet



- HellermannTyton**
- Cable Ties
  - Cabinets & Racks
  - Clamps & Clips
  - Electrical Tape
  - Label Printers
  - Labels
  - Surface Raceways
  - Tools & Applicators
  - Wiring Duct
  - Wiring Protection

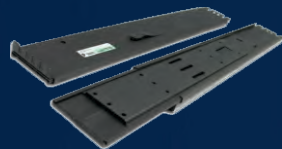


- Jergens**
- Handles & Ferrules
  - Hand-Wheels & Knobs
  - Locating Components
  - Nuts
  - Pins: Detent, Dowel, Cotter, Kwik-Lok & Spring
  - Screws, Machine, Jack, Shoulder, Panel
  - Washers
  - Work-Holding Components



## ESSENTRA

- Essentra**
- Bumpers, Feet & Motion Control
  - Bushings & Grommets
  - Cable Ties
  - Case Hardware
  - Clamps & Clips
  - Cordgrips
  - Fiber Management
  - Insulating Hardware
  - LED Mounts & Hardware
  - Motion Control
  - Nylon & Plastic Hardware
  - PCB Hardware
  - Spacers & Stand-offs
  - Wiring Protection



- General Devices**
- Cabinets & Racks
  - Equipment Slides



- Heyco**
- Bumpers & Motion Control
  - Bushings & Grommets
  - Cable Ties
  - Clamps & Clips
  - Cordgrips
  - Fan Guards & Hardware
  - Hole & Vent Plugs
  - LED Mounts & Hardware
  - Liquid-Tight Conduit
  - Liquid-Tight Fittings
  - Liquid-Tight Tubing
  - Nylon & Plastic Hardware
  - PCB Hardware
  - Rivets
  - Screw Terminals
  - Spacers & Stand-offs
  - Strain Relief Bushings
  - Terminal Blocks
  - Wiring Protection



- Harding Energy**
- Batteries & Packs
  - Battery Chargers



- Keystone**
- Battery Clips, Contacts & Holders
  - Fuse Clips & Holders
  - Handles & Ferrules
  - Hand-Wheels & Knobs
  - IDC Connectors
  - LED Spacers & Lens Caps
  - Metal Keypad Dome Switches
  - Multi-Purpose Hardware
  - Panel Hardware
  - PCB Hardware
  - Plugs, Pins, Jacks & Sockets
  - Quick-Fit Terminals
  - Screw Terminals & Terminal Blocks
  - Screws
  - Spacers & Stand-offs
  - Terminals & Terminal Boards
  - Terminal Blocks
  - Terminal Boards & Strips
  - Test Jacks & Tips
  - Test Points, Tips, Probes, Jumpers & Clips



- King Cord**
- Power Cords



# Electronic Components & Hardware



## Kyocera

- LCD Displays
- Touch Panels



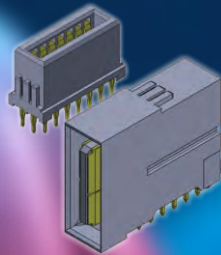
## Oupiin

- Audio & Phono Connectors
- BNC Connectors
- Board to Board Connectors
- DIN 41612
- D-Sub, SCSI & Centronic
- FFC/FPC Connectors & Cables
- Futurebus+ Connectors
- Hard Metric Connectors
- Headers
- IC & PLCC Socket
- Modular Plugs
- SIM & Memory Card Connectors
- Sockets
- Terminal Blocks
- Tools & Applicators
- USB & IEEE 1394 Connectors
- Wire Harnesses



## SI®

- Threaded Inserts for Plastic



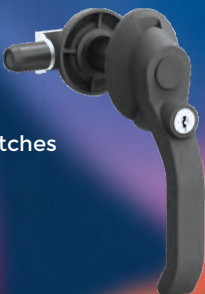
## Semitec

- Current Regulative Diode
- Gas Tube Arrestors
- Temperature Sensors
- Thermistors
- Varistors



## Mesan

- Gaskets
- Handles
- Hinges
- Locks & Latches



## PEM® Fasteners

- Cable Tie Mounts
- Hooks, Self-Clinching
- Nuts, Self-Clinching
- Panel Screws
- PCB Hardware
- Pins, Self Clinching
- Spacers, Self-Clinching
- Standoffs, Self-Clinching
- Studs, Self-Clinching



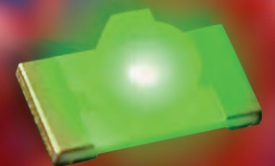
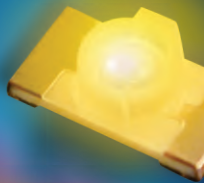
## Seiko Instruments

- Kiosk Printers
- Mobile Printers
- Panel Mount Printers
- Printer Mechanisms



## SunLED

- Displays, Bar Graph
- Displays, Dot Matrix
- Displays, Segment
- LED Assemblies
- LED Light Strips
- LEDs, Infrared
- LEDs, Surface Mount
- LEDs, Through-Hole



## Mornsun

- AC/DC Switchers
- Communication Interface Modules
- DC/DC Converters
- EMC Modules
- IGBT Drivers
- Isolation Amplifiers
- LED Drivers



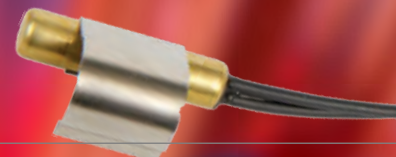
## RAF

- Handles & Ferrules
- Insulating Hardware
- PCB Hardware
- Screws, Machine, Jack, Shoulder, Panel
- Spacers & Stand-offs



## TEWA Electronics

- Temperature Sensors
- Thermistors



# Electronic Components & Hardware

## Connectors & Cables

- Alligator Clips
- Audio & Phono Connectors
- Banana Plugs & Jacks
- Binding Posts
- BNC Connectors
- Board to Board Connectors
- Crimp Terminals
- DIN 41612
- D-Sub, SCSI & Centronic
- FFC/FPC Connectors & Cables
- Futurebus+
- Hard Metric
- Headers
- IC & PLCC Socket
- Jumpers
- Micro Pins & Jacks
- Modular Plugs
- Quick-Fit Terminals
- Screw Terminals
- SIM & Memory Card Connectors
- Sockets
- Solder Lugs
- Terminal Blocks
- Terminal Boards & Strips
- Test Jacks & Tips
- Test Points & Turrets
- Tools & Applicators
- USB & IEEE 1394 Connectors

## Mechanical Hardware & Enclosures

- Brackets
- Bumpers, Feet & Motion Control
- Bushings & Grommets
- Cabinets & Racks
- Case Hardware
- Equipment Slides
- Gaskets
- Handles & Ferrules
- Hand-Wheels & Knobs
- Hinges
- Hole & Vent Plugs
- Hooks, Self Clinching
- Insulating Hardware
- Locating Components
- Locks & Latches
- Nuts
- Nuts, Self-Clinching
- Nylon & Plastic Hardware
- PCB Hardware
- Panel Screws
- Pins: Detent, Dowel, Cotter, Kwik-Lok, Self-Clinching, & Spring
- Retaining Rings
- Rivets & Eyelets
- Screws, Machine, Jack, Shoulder, Panel
- Spacers & Stand-offs
- Studs, Self-Clinching
- Washers
- Work-Holding Components

## Power Products

- AC/DC Switchers
- Batteries & Packs
- Battery Chargers
- Battery Clips, Contacts & Holders
- Current & Voltage Monitors
- Current Regulative Diode
- DC/DC Converters
- Inductors, Chokes & Beads
- Inverters
- LED Drivers
- Medical Power
- Power Cords, International
- Power Cords, Jumper
- Power Cords, Medical
- Power Cords, North American

## Switches & Relays

- Relay Sockets
- Relays, Automotive
- Relays, UL Approved
- Switches, Detector
- Switches, DIP
- Switches, Key
- Switches, Metal/Anti-Vandal
- Switches, Micro
- Switches, Panel
- Switches, Printmount
- Switches, Public Transport
- Switches, Pushbutton
- Switches, Rocker
- Switches, Slide
- Switches, SMT
- Switches, Tactile
- Switches, Toggle

## Printers & Labeling

- Kiosk Printers
- Label Printers
- Labels
- Mobile Printers
- Panel Mount Printers
- Printer Mechanisms

## Fans, Heat Sinks & Thermal Management

- AC Blowers
- AC Fans
- DC Blowers
- DC Fans
- Fan Cords
- Fan Filters, Guards & Hardware
- Forced Convection Coolers
- Heat Sink Extrusions
- Heat Sinks for LEDs
- Impellers

## Optoelectronics & Displays

- Displays, Bar Graph
- Displays, Dot Matrix
- Displays, Segment
- Lamps & Indicators
- LCD Displays
- LED Assemblies
- LED Lighting
- LED Light Strips
- LED Mounts & Hardware
- LEDs, Infrared
- LEDs, Surface Mount
- LEDs, Through-Hole
- LEDs, UV

## Protection & Sensing

- Circuit Breakers
- Fuse Clips & Holders
- Switch Boots
- Temperature Probes
- Thermistors, NTC
- Varistors

## Wire Management

- Cable Tie Mounts
- Cable Ties
- Clamps & Clips
- Cordgrips
- Electrical Tape
- Fibre Management
- Liquid-Tight Conduit
- Liquid-Tight Fittings
- Liquid-Tight Tubing
- Strain Relief Bushings
- Surface Raceways
- Wiring Duct
- Wiring Protection

## Automated alerts keep lines up and running

Keeping your bins full just got a lot easier – and a lot faster. Each IRWIN Intelligent Bin automatically detects inventory levels and instantly sends alerts, eliminating the need for counting trips and “milk runs”. That means no more safety stock, no more emergency orders, and more importantly, no more lines down. It's the automated, lean bin solution you've been waiting for.



- ❑ Reduce Order Activity
- ❑ Prompt Low-Stock Notifications
- ❑ Flexible Configurations
- ❑ Supply-Base Consolidation
- ❑ Reduce Inventory

## Maximize profits from every square foot

Waste and inefficiency can hide where you least expect. With IRWIN Intelligent Bin (I2B) Systems, you can take control and find new productivity and savings across your entire operation.

## Streamline your supply chain

Consolidation of vendors across many possible part categories means fewer orders and expedites, while providing economies of scale, lowering incoming freight costs, improving quality interaction, and increasing trust. You get reduced, but assured, inventory, and space-savings; allowing your organization to optimize your resources, focus on core competencies, and meet strategic goals.

## Keep bins full and lines running

I2B Systems eliminate inefficient manual bin counts and stock outs. That keeps production lines and assembly cells non-stop productive – and profitable.

## It's time to take control

Discover how IRWIN Intelligent Bin Systems can help you reduce wasted steps, ensure more accurate and less costly processes, and achieve true productivity across your organization.



**Heavy-Duty**  
Up to 10 kg per bin  
Dual-bin (Kanban) lanes



## Cloud-based Software

I2B Systems articulate stock levels through its cloud-based software providing clear visual information from any computer.



## Bin Configuration

Lanes and bins are configurable to manage a range of stock items. Up to 72 locations per frame comprised of small, medium and large bins.



## Automatic Notification

I2B platform is automatically notified when bins status changes allowing for constant awareness of stock levels.



## Visual Feedback

Tri-state LEDs indicate each lane's status, providing instant clear feedback in keeping with visual manufacturing practices.



## Bright Lighting

Industrial LED linear fixtures illuminate bins from above providing even lighting of shelves and stock.

## Frame Dimensions (mm)

702 depth x 2003 height x 1645 width

## Bin Dimensions (mm)

300 depth x 90 height x 117 (small); 156 (medium); 234 (large) width

# Electronic Components & Hardware

## Quality Assurance

Our in-house inspection laboratory uses state-of-the-art equipment and a dedicated inspection team to ensure products meet industry standards, specifications and customer requirements, including dimensions, hardness and plating.

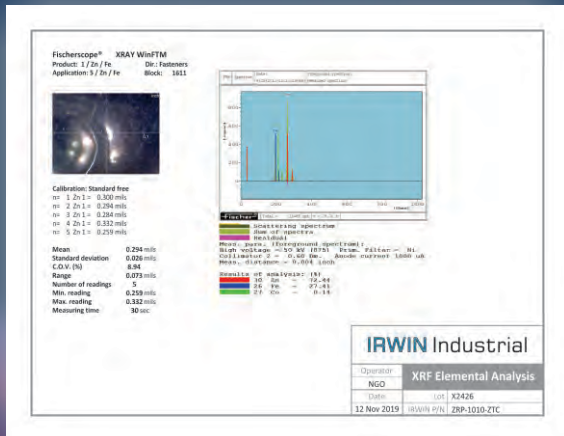
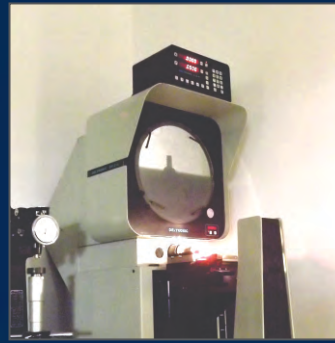
### Environmental Standards

RoHS, REACH, and other related environmental standards are expanding in scope, and a non-compliance ruling can be a financial and legal nightmare. Relying on certificates of compliance alone may not be accepted as adequate evidence of conformity. Most of the directives will require the demonstration of adequate due diligence to ensure that applicable standards are being met.

### Elemental Analysis

IRWIN Industrial uses X-ray Fluorescence Spectrometer technology to facilitate the analysis of multiple materials and coatings for restricted substances. X-ray Fluorescence Spectrometry is accepted as the best first-level, non-destructive screening method available.

We can ensure that your components - from connectors to heat sinks to 1¢ screws - are compliant, so that your product will withstand the scrutiny of compliance enforcement activity.



Also see IRWIN's **Fastener Line Card**

- Bolts & Studs
- Clips & Clamps
- Nuts
- Panel & Case Hardware
- Pins
- Screws
- Socket & Hex Cap Screws
- Spacers & Standoffs
- Washers

**SINCE 1970**

**IRWIN Industrial**

**WESTsales@**  
 115-1440 Aviation Park NE  
 Calgary, AB  
 T2E 7E2  
 403-291-3516

**CENTRALsales@**  
 2-205 Industrial Pky N  
 Aurora, ON  
 L4G 4C4  
 905-889-9100

**EASTsales@**  
 492 Avenue Lépine  
 Dorval, QC  
 H9P 2V6  
 514-556-3064

**USAsales@**  
 2775 Broadway Ave  
 Buffalo, NY  
 14227  
 905-889-9100

**800-560-9813**

**irwin-ind.com**

**800-263-3562**