

# EJOT introduces the no. 1 self-drilling screw for solar mounting systems

## EJOT® SUPER-SAPHIR JT3-2-6.0x25 E16/2



EJOT Solar Fastening Systems ([www.ejot-usa.com](http://www.ejot-usa.com)) presents the latest self-drilling screw generation EJOT SUPER-SAPHIR, for even faster assembly, productivity and efficiency for the solar and construction industry.

- The EJOT SUPER-SAPHIR innovation can reduce up to 50% of the drilling time and noticeably save labor costs when fastening roof and cladding panels. In practice this means a reduction in assembly times.
- Bi-metal self-drilling screws from the SUPER-SAPHIR range are made of SS grade 304 and feature an extremely hard carbon steel drill point in combination with high-performance leading threads.
- Used by leading solar mounting system manufacturers to fasten aluminum sheets for rear wind-protection of lightweight flat roof racking systems and to fasten special PV mounting systems directly to steel or aluminum roof profiles

### Features:

- Hexagon drive
- Free spin zone under the head facilitates longitudinal joints
- Small dead centre prevents misalignment on the component surface
- Preassembled SS washer with vulcanised elastomer for excellent atmospheric and UV resistance

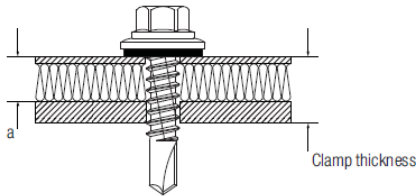
Contact us for more information:

## EJOT® Solar Fastening Systems

Mobile: 226 668 7791  
 Email: [ejotcanada@gmail.com](mailto:ejotcanada@gmail.com)  
 Website: [www.ejot-usa.com](http://www.ejot-usa.com)

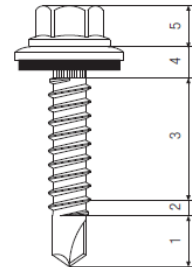
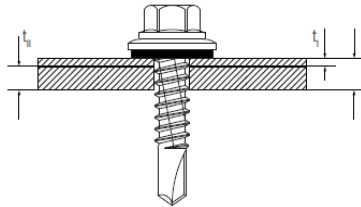
### SELF-DRILLING SCREW

$a + 6 \text{ mm} \leq \text{clamp thickness}$  (according to information in the product section)



### DRILLING PERFORMANCE

Drilling performance  $t = \text{component } t_1 + \text{component } t_2$



**DEFINITION**  
 1 = drill point  
 2 = thread intake  
 3 = full thread  
 4 = Free spin zone  
 5 = fastener head

Drive	Ø	Length	Clamping thickness	PU	How to order
Sealing washer E16/2, Ø 16 mm (5/8")					
Hex 5/16" (8mm)	1/4" (6.0mm)	1" (25mm)	17/64" (7mm)	500 pcs	JT3-2-6x25-E16/2
Approved for sheet metal thicknesses of: 0.80mm (0.03150" or gage 20) aluminum sheets / 0.55mm (0.02165" or US steel gage 24 ) steel sheets					



**EJOT®** The Quality Connection