

Warehouse  
Automation



Power  
Distribution



Data  
Center



# Industrial Automation & Infrastructure

Cable management designed for the entire lifecycle  
of automation environments

**MADE FOR REAL** 

## Industrial Automation

Still using general-purpose cable mounts and fasteners on your advanced automation systems? **It's time to simplify and speed things up.**

HellermannTyton's industrial automation-specific cable and tube management products **instantly adapt to your installation strategy** – and they streamline maintenance, too.

### Go beyond ties and sticky backs

We make them, we love them. But depending on the application, they're not always your most efficient choice. Or even the most cost effective. Check out the variety of solutions we've developed for faster installs – such as our **EZ Feed** technology – that perform better, too.

### Replace less often

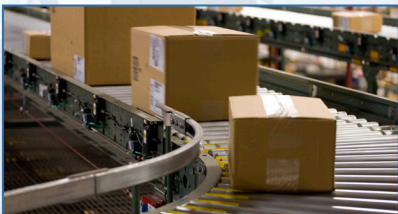
Technical materials and superior engineering – they're at the heart of HellermannTyton installation products. Downtime is costly – more costly than an optimized cable routing and mounting system.

### Safer maintenance

A simple task like cutting off cable ties can result in nicking cables and adding hours to the work. Exclusive features like our patent-pending **CutZone** make maintenance faster and less risky.

### Faster. Easier. Longer lasting.

One look through this industrial automation product guide is all you need. There's no better unified solution for your unique installations than cable management from HellermannTyton.



WAREHOUSE AUTOMATION



POWER DISTRIBUTION



DATA CENTER

# Warehouse Automation



## CABLE TIE MOUNTS



### Cable Stacker

Conveyor installers can easily separate power and signal, achieving ultra-organized cable runs from planning to completion.

**Part No.:** 151-04218

**Applications:** Cable routing and mounting



### Sensor Mount

A proximity sensor mount that installs faster and can take the abuse of a constantly moving industrial environment.

**Part No.:** 151-04215

**Applications:** Sensor mounting

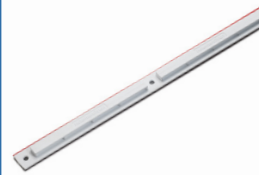


### Cradle Mount (Frame)

Fast cable routing with twist-on simplicity. Easy to reposition. No cable tie needed to hold routings in place.

**Part No.:** 151-04482

**Applications:** T-slot frame mounting



### WireRail

Replaces multiple adhesive mounts, providing one, clean line of attachment points. Allows adjustment of cable tie locations.

**Part No.:** 151-04657

**Applications:** Circuit breaker panel wiring, traditional sticky backs replacement



### Anchor Mount

Built-in radius control navigates bends and door-to-cabinet transitions. Faster to deploy than multiple adhesive mounts.

**Part No.:** 151-04681

**Applications:** Door wiring

## CABLE TIES



### Standard Cable Ties

Cable ties come in a variety of sizes to accommodate wire and cable bundles in a range of applications.

**Part No.:** T18R0M4, T50R0M4

**Applications:** Cable securing



### Grip Tie Strap

One-piece fastening device constructed of a hook and loop design featuring quick release for repetitive access. Available in pre-cut versions and rolls.

**Part No.:** GT.375X1800, GT.50X80C2

**Applications:** Soft cable management



### Flat Ribbon Clamps

Secure flat ribbon cables without damage. Adjusts to different cable heights. Releasable when access is necessary. Arrowhead for easy mounting.

**Part No.:** 151-04767

**Applications:** Snap-in side-channel cable management



### Ratchet Clamps

Exclusive, robust clamp design adjusts to multiple sized routings. One-piece, fully enclosed solution can be reopened for bundle servicing.

**Part No.:** 151-03548 (EMT)

**Applications:** Air pipe mounting, EMT mounting



### Snapper Clamp

Quickly secure conveyor netting with this locking clamp. Easy to attach with one hand. Can reopen for servicing.

**Part No.:** SNP7GHS0M4

**Applications:** Securing conveyor safety netting to support cables

## ROUTING AND PROTECTION



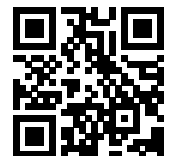
### Grommet Edging

Flexible protection prevents abrasion to routings that must pass through sharp panel holes.

**Part No.:** FHC, FPD

**Applications:** Cable abrasion protection

SCAN CODE FOR FULL PART LISTING



# Power Distribution



## CABLE TIE MOUNTS



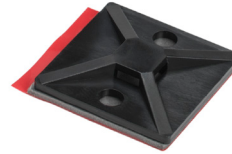
**Cradle Mount (Adhesive)**  
Fast cable routing with peel & stick simplicity. Easy to insert and remove cables while staging. No cable tie needed to hold routings in place.  
**Part No.:** 151-04727  
**Applications:** Interior cabinet wire routing



**Wire Rail**  
Replaces multiple adhesive mounts, providing one, clean line of attachment points. Allows adjustment of cable tie locations.  
**Part No.:** 151-04574  
**Applications:** Circuit breaker panel wiring, traditional sticky backs replacement



**Anchor Mount**  
Built-in radius control navigates bends and door-to-cabinet transitions. Faster to deploy than multiple adhesive mounts.  
**Part No.:** 151-04681  
**Applications:** Door wiring



**Adhesive Mount**  
Acrylic adhesive is stronger and longer lasting than common rubber-based adhesive. Four-way cable tie entry.  
**Part No.:** 151-01632  
**Applications:** Lack of pre-drilled holes



**Saddle Mount**  
Accommodates heavy duty ties. Route single or dual bundles with separation option utilizing integrated saddles.  
**Part No.:** 151-04487  
**Applications:** Cable mounting / routing

## CABLE TIES



**Standard Cable Ties**  
Cable ties come in a variety of sizes to accommodate wire and cable bundles in a range of applications.  
**Part No.:** T18R9M4, T50R9M4  
**Applications:** Cable securing



**Heavy Duty Cable Ties**  
Heavy duty cable ties are available in longer lengths, 8" - 52", for securing larger bundles.  
**Part No.:** T120R0H4  
**Applications:** Heavy duty cable securing



**Cable Tie with Edge Clip**  
Bundle and route with this two-piece part. Edge clip easily pushes on to a panel edge without tools and holds tight.  
**Part No.:** 156-02226, -02228  
**Applications:** Wire harness mounting

## CLIPS AND CLAMPS



**Locking Clamp with Edge Clip**  
High-performance clamp secures multi-diameter bundles and tubes. Edge clip easily pushes on to a panel edge without tools and holds tight.  
**Part No.:** 151-03865  
**Applications:** Wire harness mounting



**MOC Clips to MOC Clips**  
Dual clip comes in a range of sizes for a perfect fit and fast installs. Delivers the best tube retention performance in the industry.  
**Part No.:** 156-02355  
**Applications:** Tube and power-rated cable separation

# Power Distribution



## ROUTING AND PROTECTION



### Wiring Duct

Smooth edges protect installers' hands. Easy finger break-offs simplify branch-outs.

**Part No:** SLHD2X4, SL2X4

**Applications:** Organize / route cables in high-density environments



### Wiring Duct Covers

Protective covers won't slide.

**Part No:** TC1, TC2, TC3, TC4

**Applications:** Organize / route cables in high-density environments



### Helawrap

Flexible routing and protection. Installs with a "zipper-like" motion using included tool. Guards against abrasion and motion-related stress.

**Part No.** 161-64507

**Applications:** Cable abrasion protection

## IDENTIFICATION



### Safety Labels

Colored headers and safety icons get attention. You need only add your message in black print. Long lasting and chemical resistant.

**Part No:** 558-00381, 596-00646

**Applications:** UV-rated warning labels



### ShrinkTrak

Heat shrinkable wire markers designed for easy printing using a thermal transfer printer. Slit in side allows insertion of wire.

**Part No:** 553-55022, -50019

**Applications:** Wire markers

SCAN CODE FOR  
FULL PART LISTING



# Data Center

SCAN CODE FOR  
FULL PART LISTING



## CABLE TIE MOUNTS

## CABLE TIES



### WireRail

Replaces multiple adhesive mounts, providing one, clean line of attachment points. Allows adjustment of cable tie locations.

**Part No.:** 151-04657

**Applications:** Traditional sticky backs replacement



### Adhesive Mount

Acrylic adhesive is stronger and longer lasting than common rubber-based adhesive mounts. Four-way cable tie entry.

**Part No.:** MB4A10A2H4

**Applications:** Lack of pre-drilled holes



### Anchor Mount

Built-in radius control navigates bends and door-to-cabinet transitions. Faster to deploy than multiple adhesive mounts.

**Part No.:** 151-04681

**Applications:** Door wiring



### Standard Cable Ties

Cable ties come in a variety of sizes to accommodate wire and cable bundles in a range of applications.

**Part No.:** T18R0M4, T50R0M4

**Applications:** Cable securing



### Heavy Duty Cable Ties

Heavy duty cable ties are available in longer lengths, 8" - 52", for securing larger bundles.

**Part No.:** T120R0H4

**Applications:** Heavy duty cable securing



### Grip Tie Strap

One-piece fastening device constructed of a hook and loop design featuring quick release for repetitive access. Available in multiple color choices.

**Part No.:** GT.375X1800, GT.50X80C2

**Applications:** Sensitive cable management

## ROUTING AND PROTECTION

## IDENTIFICATION

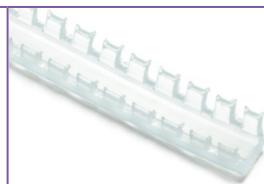


### Wiring Duct and Covers

Smooth edges protect installers' hands. Easy finger break-offs simplify branch-outs. Protective covers won't slide.

**Part No.:** SLHD2X4, SL2X4, TC1, TC

**Applications:** Organize / route cables in high-density environments



### Grommet Edging

Flexible protection prevents abrasion to routings that must pass through sharp panel holes.

**Part No.:** FHC, FPD

**Applications:** Cable abrasion protection



### FlagTags

Ideal for cable groups. Large print area manages lots of data and can be viewed more easily in cramped spaces.

**Part No.:** 596-97003

**Applications:** Server rack identification



### BundleTags

Adhesive-backed, printable label that displays your cable bundle's tracking data. Wraps around cables to replace twist ties.

**Part No.:** 596-97007

**Applications:** High-density wire identification



### CIJ4800 Printer

Create full-color, photo-quality labels and signs in a single pass. Pigment-based inks for maximum resistance to chemicals and solvents.

**Part No.:** CIJ4800

**Applications:** Interior signage labeling

### HellermannTyton North American Corporate Headquarters

7930 N. Faulkner Rd, PO Box 245017  
Milwaukee, WI 53224-9517  
Phone: (414) 355-1130, (800) 537-1512  
Fax: (414) 355-7341, (800) 848-9866  
email: corp@htamericas.com  
www.hellermann.tyton.com

**IATF 16949, AS9100, ISO 9001 and ISO14001 certified**

### HellermannTyton Canada

Unit #4, 205 Industrial Parkway North  
Aurora, Ontario L4G 4C4 Canada  
Phone: (800) 661-2461  
Fax: (800) 390-3904  
email: sales@hellermanntyton.ca

**HellermannTyton**

### HellermannTyton Mexico

Anillo Periferico Sur 7980 Edificio 6A  
Parque Industrial Tecnológico II  
Santa María Tequepexpan  
Tlaquepaque, Jalisco, Mexico 45601  
Phone: 011-52-33-3-133-9880  
Fax: 011-52-33-3-133-9861  
email: info-mx@hellermanntyton.com

**ISO 9001 certified**

**Warranty Policy** – HellermannTyton products are warranted to be free from defects in material and workmanship at the time sold by us; but our obligation under this warranty and that of the seller is limited to the replacement of the product, and neither we nor the seller are bound by any other warranty, expressed, implied or statutory. Under no circumstances are we or the seller liable for any loss, damage, expenses or consequential damages of any kind arising out of the use or inability to use these products. All are sold with the understanding that the user will test them in actual use and determine their adaptability for the intended uses.