

SimpleTube Slimm™ AB-STU Series Specification

DESCRIPTIONS

SimpleTube Slimm™ is designed to replace more costly, less efficient, and mercury-containing products currently in place, such as fluorescent and compact fluorescent lights (CFL)

FEATURES

Retrofit for T8 Fluorescent Lamp 1~6 feet
Energy Efficiency & Long Life
Ballast-Free & User-Friendly Installation
Adjustable Light Distribution



APPLICATIONS

Under Cabinet Lighting
Display Case Lighting
Freezer Case Display Lighting
Commercial Refrigeration Lighting
Street Name Signage
Outdoor/Indoor Signage

CHARACTERISTICS*

Dimension: 1, 2, 3, 4, 5, 6feet

Electrical: 120VAC, 60Hz

UL Listed File No.: E330855



NSF/ANSI 2
SA32926

SimpleTube Slimm™ AB-STU Series Specification

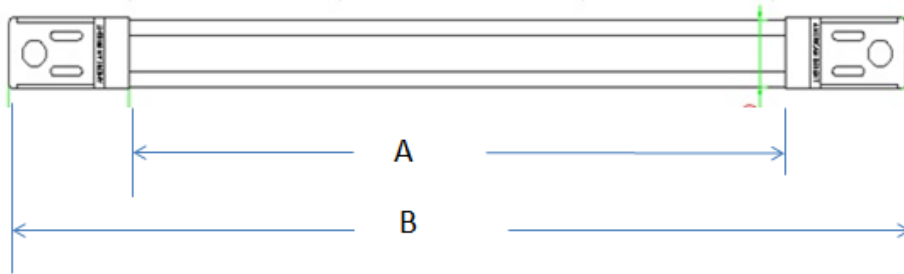
Performance Data:

Model No.	Description	Total Lumen	Wattages	CRI	Warranty Hrs.
AB-STU-164004C	16", center unit, 4000K	300	4	>80	50000
AB-STU-164002E	16", end unit, 4000K	170	2		
AB-STU-264008C	26", center unit, 4000K	600	8		
AB-STU-264004E	26", end unit, 4000K	340	4		
AB-STU-374012C	37", center unit, 4000K	900	12		
AB-STU-374006E	37", end unit, 4000K	510	6		
AB-STU-484016C	48", center unit, 4000K	1200	16		
AB-STU-484008E	48", end unit, 4000K	680	8		
AB-STU-604020C	60", center unit, 4000K	1500	20		
AB-STU-604010E	60", end unit, 4000K	850	10		
AB-STU-684024C	68", center unit, 4000K	1800	24		
AB-STU-684012E	68", end unit, 4000K	1020	12		

Selection Guide:

Model Length	Fixture Color	CCT	Unit Type
16	Black*	3000 K 4000 K 5000 K	Center Unit End Unit
26			
37			
48			
60			
68			

* Customized items are available upon request

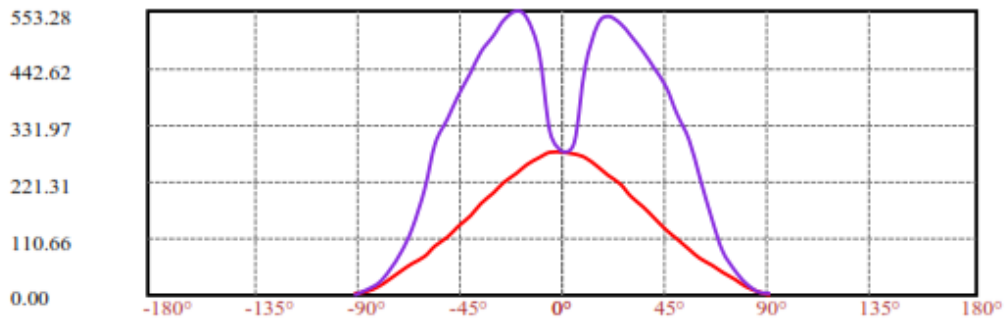
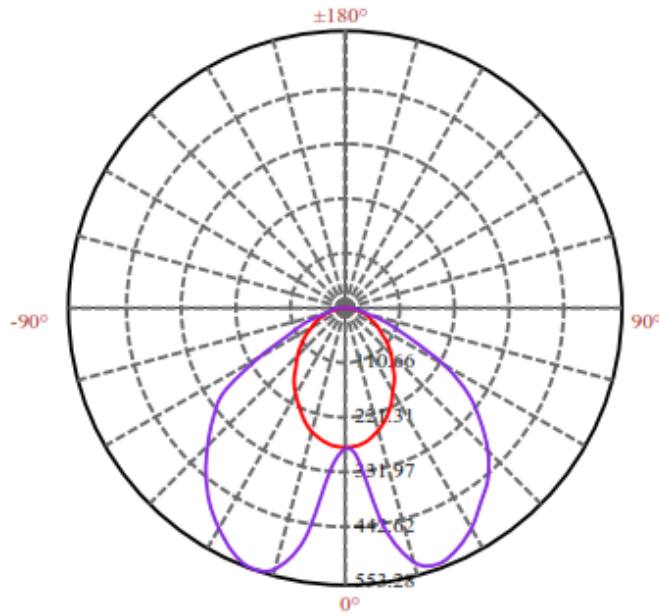


Length Guide:

Model	A: Aluminum Base	B: Total Length	Height	Wire Length	
				center	end
AB-STU-16	12.0	15.6	0.67	12	24
AB-STU-26	22.7	26.3	0.67	16	30
AB-STU-37	33.3	37.0	0.67	20	35
AB-STU-48	44.4	48.1	0.67	28	51
AB-STU-60	56.5	60.1	0.67	33	63
AB-STU-68	64.8	68.3	0.67	39	75

Unit: Inch

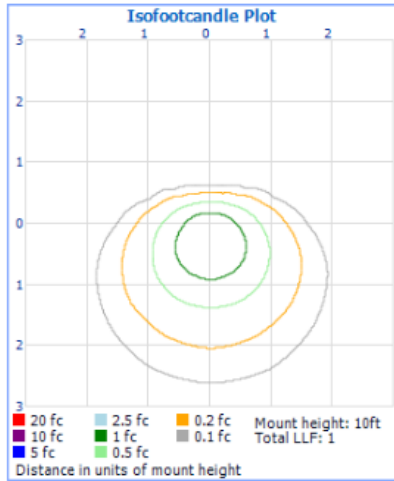
Center Zonal:



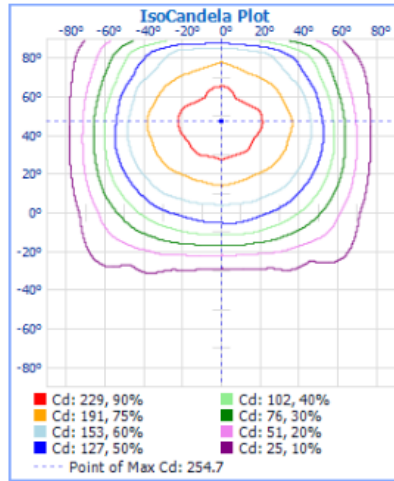
C0/C180: —
 C90/C270: —

End Zonal:

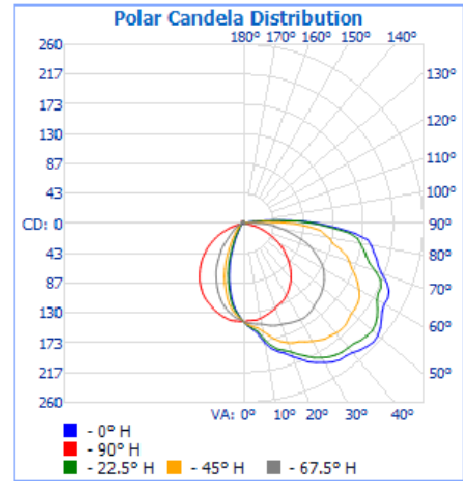
The following images depict the luminous intensity distribution characteristics of the luminaire:



Isofootcandle Plot



Isocandela Plot



Polar Candela

SimpleTube Slimm™ Refrigerator Case Light

Installation Instructions

Center /End Unit



WARNING! BEFORE PROCEEDING OBSERVE THE FOLLOWING:

- A. Only licensed electrician to perform this installation.
- B. Prior to installation or servicing, remember to switch off the power.

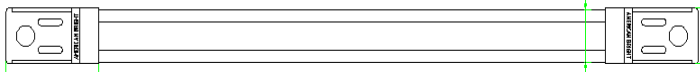


ELECTRICAL REQUIREMENTS:

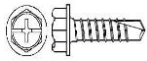
- A. This product must be supplied with 120V, 60Hz and connected to an individual properly grounded branch circuit, protected by a circuit breaker or time delay fuse.
- B. Wiring is 3-wire and rated for 75°C (176°F) minimum.

SUPPLIED:

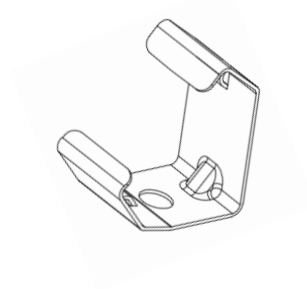
SimpleTube Slimm™



#10 Self Tapping Screw (3~4)



Bracket (2~3)(End Unit Only)

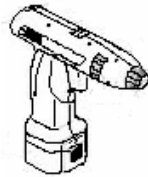


REQUIRED:

Wire Nuts



Power Drill



Wire Cutter Pliers



Undershelf Unit:

STEP 1: Remove Existing Fluorescent Lighting

- Turn off power to lighting system.
- Remove clips, shield, fluorescent tube, and ballast for the existing fluorescent lighting fixture. Leave existing power input wires in the raceway.
- Cut off and remove any fluorescent fixture ends.

STEP 2: Install SimpleTube Slimm™ to a solid flat surface / Wiring

- There are two screw holes on each end, one in left of endcap and the other at the right.
- Feed the SimpleTube Slimm™ power leads through pre-existing holes whether on top or bottom.
- Mount the SimpleTube Slimm™ against the mullion using a power drill and the provided self-tapping screws. (as Figure.1)



Figure. 1

- Take SimpleTube Slimm™ power leads and connect it with the existing power supply wires using a wire nut on other side of mullion in the raceway. Black wire to hot line, white wire to neutral, Green wire to ground
- Remove or cap off existing unused power supply leads.
- Turn on power to test if it lights up.

NOTE: For center unit it does not matter if you use top or bottom wiring hole. However, for the end units, dependent on orientation of the SimpleTube Slimm™ to have LEDs angled inward.

End Unit:

STEP 1: Remove Existing Fluorescent Lighting

- Turn off power to lighting system.
- Remove clips, shield, fluorescent tube, and ballast for the existing fluorescent lighting fixture. Leave existing power input wires in the raceway.
- Cut off and remove any fluorescent fixture ends.

STEP 2: Install SimpleTube Slimm™ to a solid flat surface **with Bracket** / Wiring

- There is one screw hole on the bracket.
- Feed the SimpleTube Slimm™ power leads through pre-existing holes whether on top or bottom.
- Mount the bracket against the mullion using a power drill and the provided self-tapping screws. (as Figure.2)

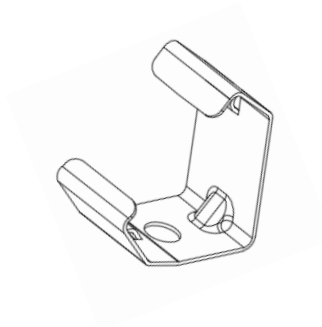


Figure. 2.

- Snap SimpleTube Slimm™ to the bracket with lower end first. (as Figure. 3)

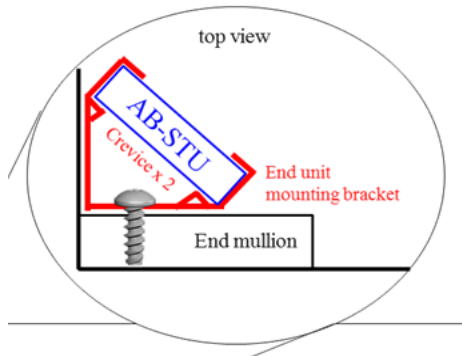


Figure. 3

- Take SimpleTube Slimm™ power leads and connect it with the existing power supply wires using a wire nut on other side of mullion in the raceway. Black wire to hot line, white wire to neutral, Green wire to ground
- Remove or cap off existing unused power supply leads.
- Turn on power to test if it lights up.

NOTE: For center unit it does not matter if you use top or bottom wiring hole. However, for the end units, dependent on orientation of the SimpleTube Slimm™ to have LEDs angled inward.