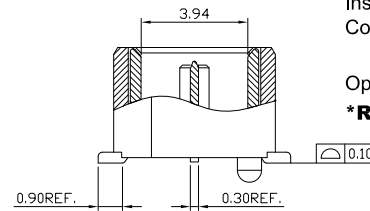
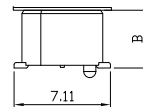
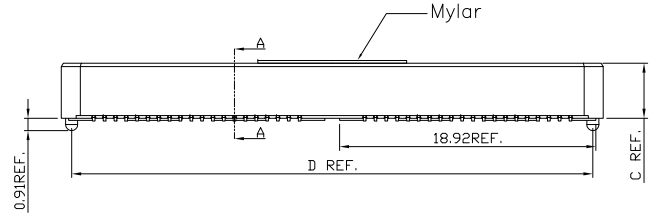
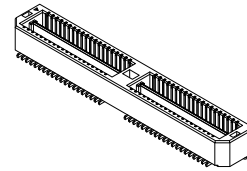
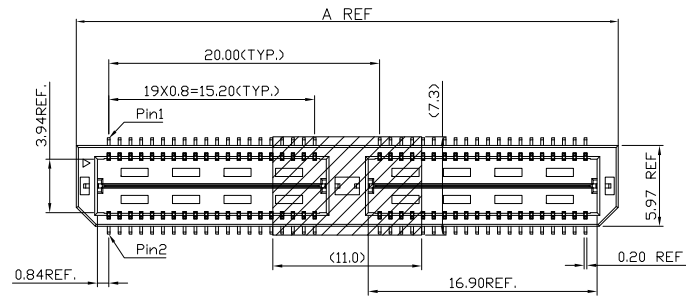
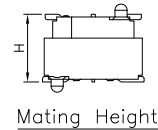
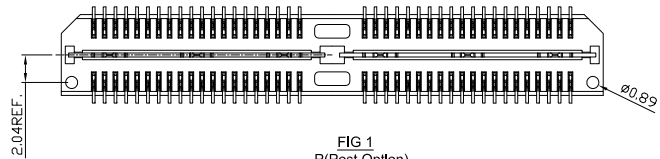


REV.	SPECIFICATION	ECN NO.	APPD.
R2		ECN240516	



Sectional A-A  
Scale 2:1



Mating Height

FIG 1  
-P(Post Option)  
(Only Available on Code 1, 2 & 3)

2384- xx M C x D P 1 N x x T -S

Series: S: Mylar  
Blank: Without Pad  
Position: T: Tape & Reel Package  
U: Tube Package  
M: Male  
C: Selective Gold Plated  
D: SMD Type  
N: W/O Post  
P: With Post  
PI: Up & Down Post and P

Blank: Without Friction lock  
F: Friction lock  
Blank: Without Guides  
G: Guides Pin  
N: W/O Lock  
L: With Lock(Press Fit)  
L1: With Lock(Solder)  
Code 1~10

**Material and Plating:**

**Housing:** LCP, UL94V-0 , Black.  
**Signal Contacts :** Phosphor Bronze.  
Gold Plated on Contact Area and 80u" Min Tin Plated on Solder Tail over nickel 50u" Min .  
**Ground Contacts :** Brass.  
Gold Plated on Contact Area and 80u" Min Tin Plated on Solder Tail over nickel 50u" Min .

**Electrical Characteristics:**

**Current Rating:** Signal: 3A Per Contact With 3 Adjacent Contacts (UL).  
Ground: 25A Per Contact With 1 Contact.  
**Voltage Rating:** 125V AC .  
**Dielectric Withstanding Voltage:** 675V AC For 1 minute.  
**Insulator Resistance:** 5000MΩ min at DC 500V.  
**Contact Resistance:** Signal: 45mΩ max .  
Ground: 15mΩ max .  
**Operating Temperature:** -55°C ~ +125°C .

**\*RoHS Compliant**

Code	B	C
1	4.267	4.064
2	7.267	7.064
3	10.267	10.063

Code	Pos.	Dimension	
		A	D
	40	20.00	18.48
*	80	40.01	38.48

5mm Stack Height	Rated@3dB Insertion Loss	
	With PCB effects	W/O PCB effects
Single-Ended Signaling	9GHz / 18Gbps	9GHz / 18Gbps
Differential Pair Signaling	8GHz / 16Gbps	14GHz / 28Gbps

Code:1~10 (B)	1	2	3	4	5	6	7	8	9	10
Male	4.267	7.267	10.267	15.265	18.263	21.260	24.231	29.260	13.258	14.239
Female	3.25	3.25	3.25	3.25	3.25	3.25	3.25	3.25	3.25	3.25
Mating Height(H)	5.00	8.00	11.00	16.00	19.00	22.00	25.00	30.00	14.00	15.00

Tolerances	Dwg. No.	2384-D0000-002
x = ±0.5	Projection	
.x = ±0.25	Unit	mm
.xx = ±0.15	Scale	1:1
	Drawn By	WP 05/11'24

Title:  
2384 Series  
High Speed Board to Board  
Pitch 0.8mm (Plug)

**OUPIN**  
OUPIN ELECTRONIC(KUNSHAN) CO., LTD.  
P/N: 2384-xxMCxDP1NxT-S  
SHEET 1/7 Ver. No. R2

REV.	SPECIFICATION	ECN NO.	APPD.
R2		ECN240516	

TABLE 4	
Code	T
1	4.47
2	7.47
3	10.47
4	15.47
5	18.47
6	21.46
9	13.46
10	14.44

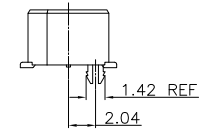
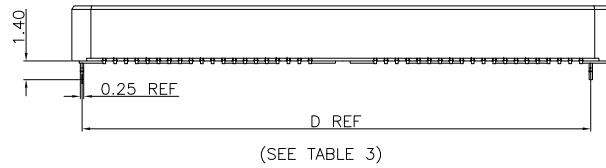


FIG 2  
-L(With Lock)  
DIFFERENT AS SHOWN. OTHERWISE SAME AS FIG 1

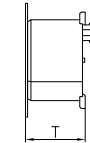
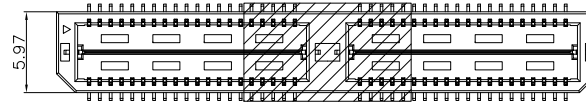


FIG 3  
-S: WITH Mylar

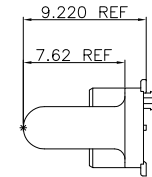
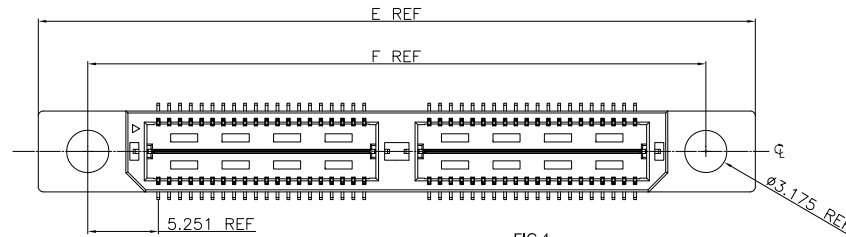


FIG 4  
-G(Guides Pin)  
DIFFERENT AS SHOWN. OTHERWISE SAME AS FIG 1  
(AVAILABLE ON Code1 ONLY)

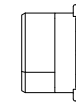
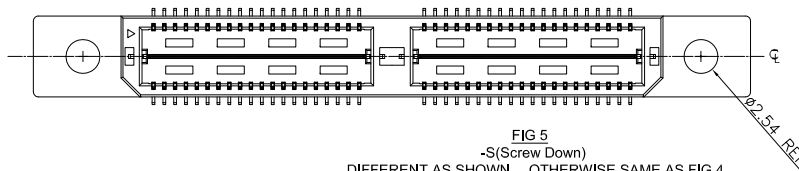


FIG 5  
-S(Screw Down)  
DIFFERENT AS SHOWN. OTHERWISE SAME AS FIG 4  
(AVAILABLE ON Code1 ONLY)

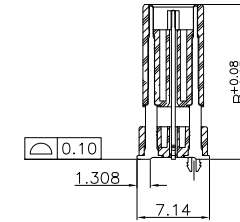
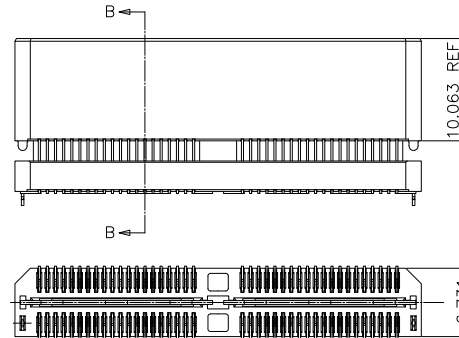
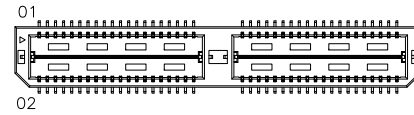
TABLE 5		
No OF POS	E	F
40	33.15	25.72
80	53.15	45.72

Tolerances	Dwg. No.	2384-D0000-002		Title:	
x = ±0.5	Projection			2384 Series	
.x = ±0.25	Unit	mm	Scale	1:1	
.xx = ±0.15	Drawn By	WP 05/11'24		High Speed Board to Board Pitch 0.8mm (Plug)	

<b>OUPIN</b>			
OUPIN ELECTRONIC(KUNSHAN) CO., LTD.			
P/N:		2384-xxMCxDP1NxxT-S	
SHEET	2/7	Ver. No.	R2

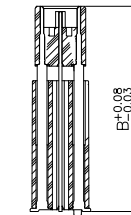
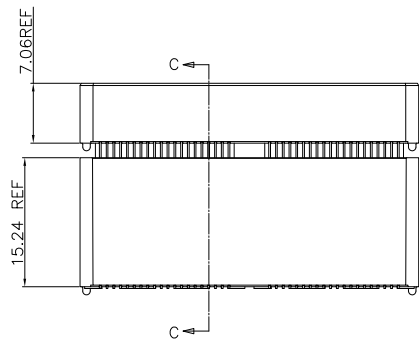
TABLE 6		
Code	SEE FIGURE	B OVERALL HEIGHT
4	1	15.265
5	2	18.263
6	2	21.260
7	3	24.232
8	3	29.235
9	1	13.259
10	1	14.239

REV.	SPECIFICATION	ECN NO.	APPD.
R2		ECN240516	



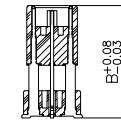
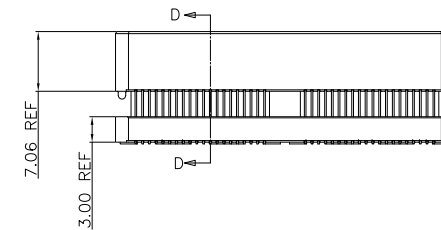
SECTION B-B

FIG 6  
DIFFERENT AS SHOWN, OTHERWISE SAME AS FIG 1  
(Code 4, 5 & 6)



SECTION C-C  
SCALE 1.25:1

FIG 7  
DIFFERENT AS SHOWN, OTHERWISE SAME AS FIG 6  
(Code 7 & 8)



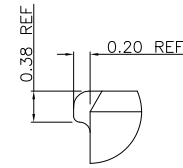
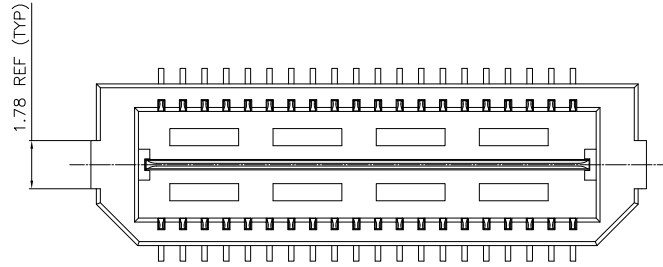
SECTION D-D  
SCALE 1.25:1

FIG 8  
DIFFERENT AS SHOWN, OTHERWISE SAME AS FIG 6  
(Code 9 & 10)

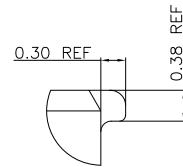
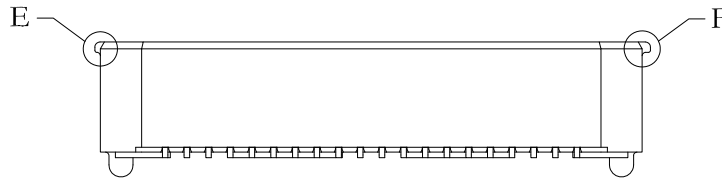
Tolerances	Dwg. No.	2384-D0000-002		Title:	
x = ±0.5	Projection			2384 Series	
.x = ±0.25	Unit	mm	Scale	1:1	High Speed Board to Board
.xx = ±0.15	Drawn By	WP 05/11'24			Pitch 0.8mm (Plug)

<b>OUPIN</b>			
OUPIN ELECTRONIC(KUNSHAN) CO., LTD.			
P/N:		2384-xxMCxDP1NxxT-S	
SHEET	3/7	Ver. No.	R2

REV.	SPECIFICATION	ECN NO.	APPD.
R2		ECN240516	

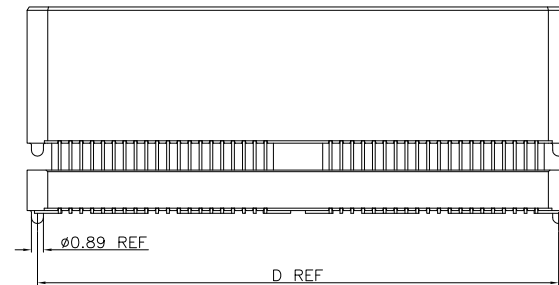


DETAIL E  
SCALE 12:1



DETAIL F  
SCALE 12:1

FIG 9  
-F(Friction locks)  
(DIFFERENT AS SHOWN, OTHERWISE SAME AS FIG 1)  
(Only Available on Code 1 & 2.)  
(Not Available with -G, -S Options)



(SEE TABLE 3)

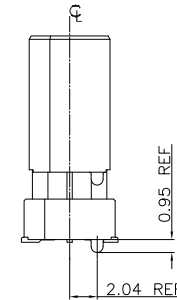


FIG 10  
(DIFFERENT AS SHOWN, OTHERWISE SAME AS FIG 1)  
(Code 4, 5, 6, 7, 8, 9 & 10, SEE TABLE 7)

Tolerances	Dwg. No.	2384-D0000-002		Title:	
x = ±0.5	Projection			2384 Series	
.x = ±0.25	Unit	mm	Scale	1:1	High Speed Board to Board
.xx = ±0.15	Drawn By	WP 05/11'24			Pitch 0.8mm (Plug)

2384 Series  
High Speed Board to Board  
Pitch 0.8mm (Plug)

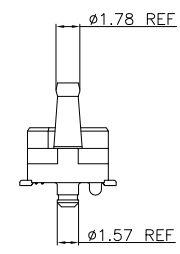
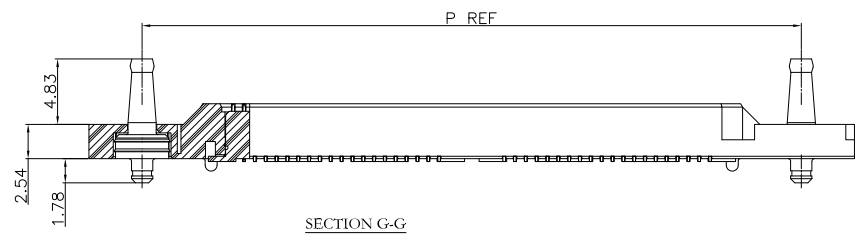
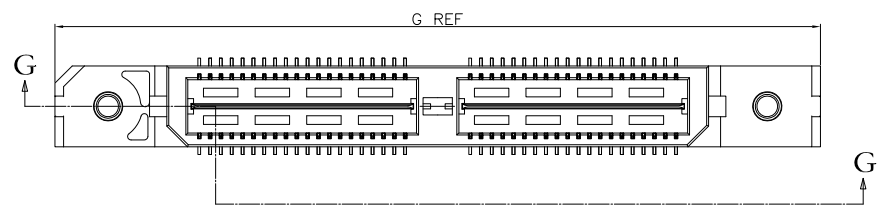


OUPIIN ELECTRONIC(KUNSHAN) CO., LTD.

P/N: 2384-xxMCxDP1NxxT-S

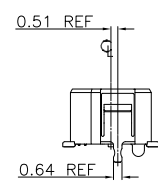
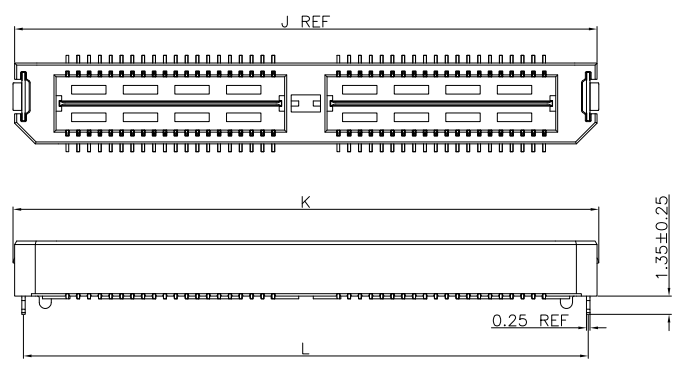
SHEET	4/7	Ver. No.	R2
-------	-----	----------	----

REV.	SPECIFICATION	ECN NO.	APPD.
R2		ECN240516	



No OF POS	G	P
40	36.53	28.68
80	56.53	48.68

**FIG 11**  
 -P1(Up & Down Post and P)  
 DIFFERENT AS SHOWN. OTHERWISE SAME AS FIG 1  
 (Only Available ON Code 1 )(Must Use -P Option)  
 (Not Available with -L, -G, -S, or -F Options)



No OF POS	J	K	L
40	23.00	23.24	21.69
80	43.00	43.24	41.69

**FIG 12**  
 -L1(With Lock)  
 DIFFERENT AS SHOWN. OTHERWISE SAME AS FIG 1  
 (80 Pin MAX) (Must Use -P Option)  
 (Available ON Code 1 Only)  
 (Not Available with -L, -G, -S, -F, or -P1)

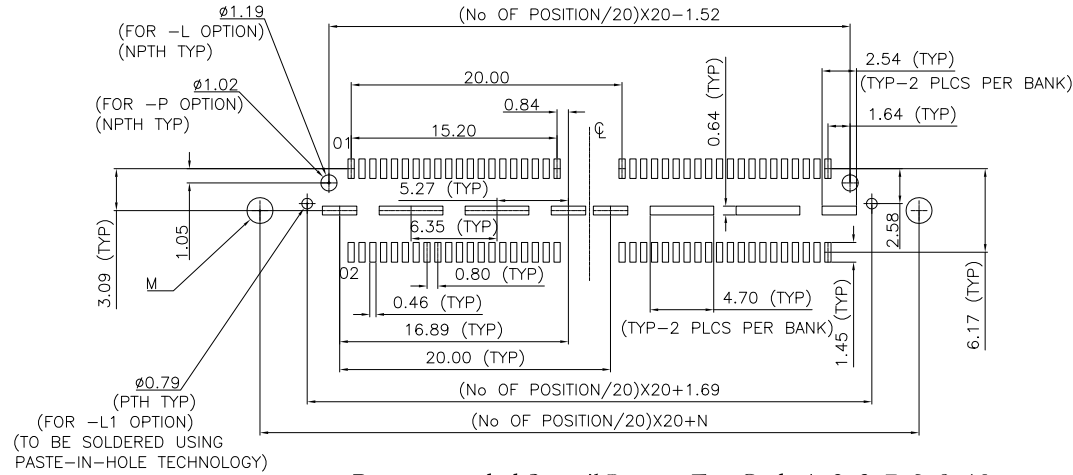
Tolerances	Dwg. No.	2384-D0000-002		Title:		
x = ±0.5	Projection			2384 Series High Speed Board to Board Pitch 0.8mm (Plug)		
.x = ±0.25	Unit	mm	Scale			1:1
.xx = ±0.15	Drawn By	WP 05/11'24				

**OUPIN**  
**OUPIN ELECTRONIC(KUNSHAN) CO., LTD.**

**P/N:** 2384-xxMCxDP1NxxT-S

SHEET	5/7	Ver. No.	R2
-------	-----	----------	----

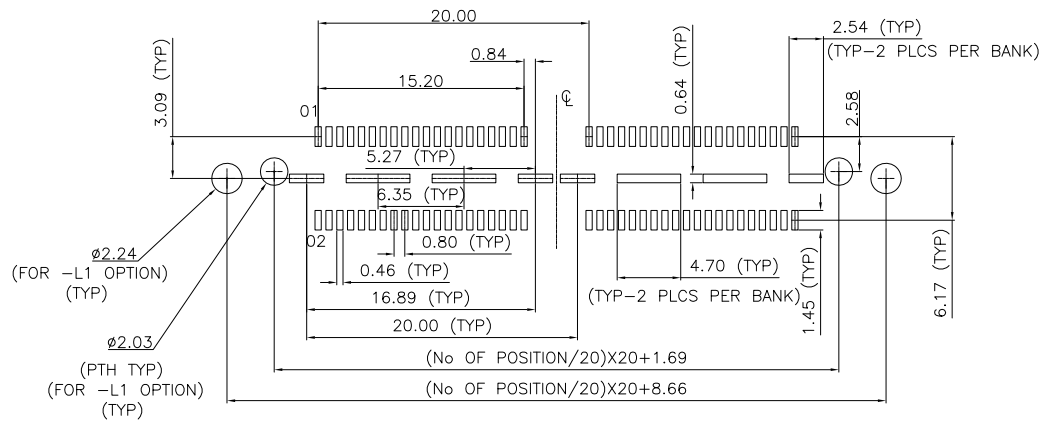
REV.	SPECIFICATION	ECN NO.	APPD.
R2		ECN240516	



Recommended Stencil Layout For Code 1, 2, 3, 7, 8, 9, 10  
(Tolerance:±0.05)

NOTE:  
STENCIL TO BE 1.52 THICK.

OPTION	M	N
-S	2.54	5.72
-P1	1.91 PTH TYP	8.66



Recommended Stencil Layout For Code 1, 2, 3, 7, 8, 9, 10  
(Tolerance:±0.05)

Tolerances	Dwg. No.	2384-D0000-002		Title:	
x = ±0.5	Projection			2384 Series	
.x = ±0.25	Unit	mm	Scale	High Speed Board to Board	
.xx = ±0.15	Drawn By	WP 05/11'24	1:1	Pitch 0.8mm (Plug)	

2384 Series  
High Speed Board to Board  
Pitch 0.8mm (Plug)



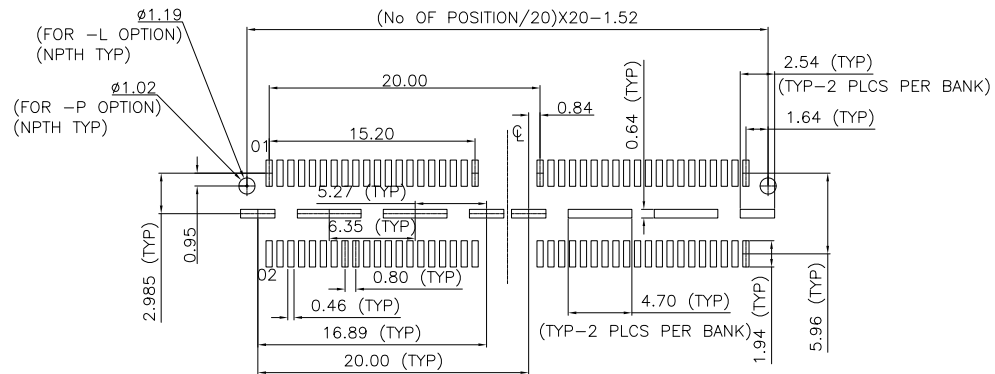
OUPIIN ELECTRONIC(KUNSHAN) CO., LTD.

P/N: 2384-xxMCxDP1NxxT-S

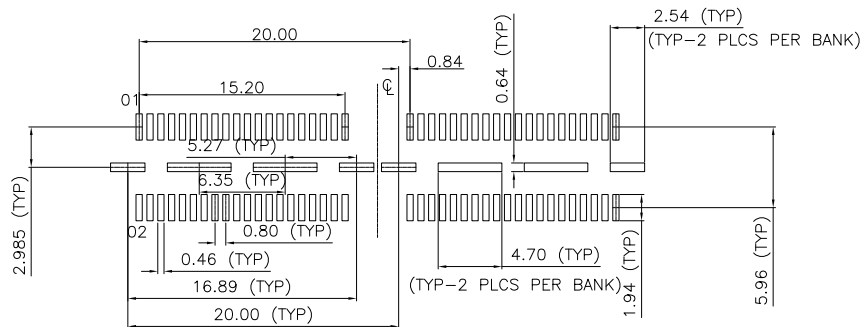
SHEET	6/7	Ver. No.	R2
-------	-----	----------	----

REV.	SPECIFICATION	ECN NO.	APPD.
R2		ECN240516	

NOTE:  
STENCIL TO BE 1.52 THICK.



Recommended Stencil Layout For Code 4, 5, 6  
(Tolerance:±0.05)



Recommended Stencil Layout For Code 4, 5, 6  
(Tolerance:±0.05)

Tolerances	Dwg. No.	2384-D0000-002		Title:	
x = ±0.5	Projection	⊕ ↗		2384 Series	
.x = ±0.25	Unit	mm	Scale	High Speed Board to Board	
.xx = ±0.15	Drawn By	WP 05/11'24	1:1	Pitch 0.8mm (Plug)	



OUPIIN ELECTRONIC(KUNSHAN) CO., LTD.

P/N: 2384-xxMCxDP1NxxT-S

SHEET	7/7	Ver. No.	R2
-------	-----	----------	----